

**CLASS RATING :**

EXTRA HEAVY DUTY

**LIVE LOAD :**

T44, W80 LOADING

**DEAD LOAD :**

0 TO 2.0m OF FILL

**CONCRETE GRADE :**

40 MPa

**LIFTING :**

BASE : 3 x 2FA075

LID : 3 x 5FA170

**TOTAL MASS :**

LID = 5.010 TONNES

BASE = 5.955 TONNES

**NOTES :**

B1 EXPOSURE CLASSIFICATION  
25 mm COVER TYPICAL



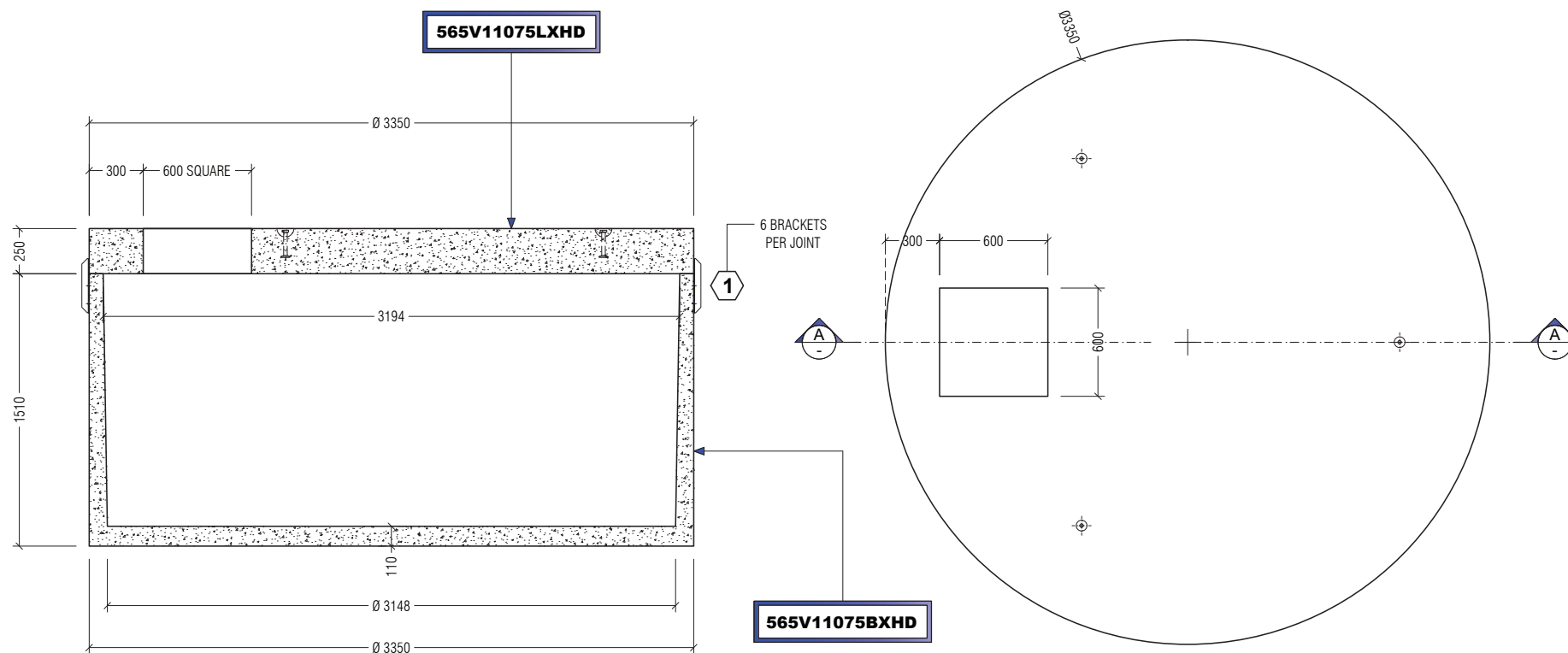
Quality  
ISO 9001



**TANKET**  
Cnr Bayfield Rd East & Canterbury Rd,  
Bayswater North 3153 Vic Australia  
T: 1300 826 538 www.tanket.com.au

**11,075 Litre Concrete Tank  
Extra Heavy Duty**

SCALE	-	DRG No.	REV
DATE	10.02.15	565V11075XH	A
DRAWN	R.P.	CHECKED	D. EGAN
			SIZE A3



**SECTION A-A**

**PLAN VIEW**

No.	ITEM CODE	QTY	DESCRIPTION
1	VTBRACKHD	6	H.D. TANK BRACKETS

No.	DATE	REVISIONS
A	10.02.15	FIRST ISSUE