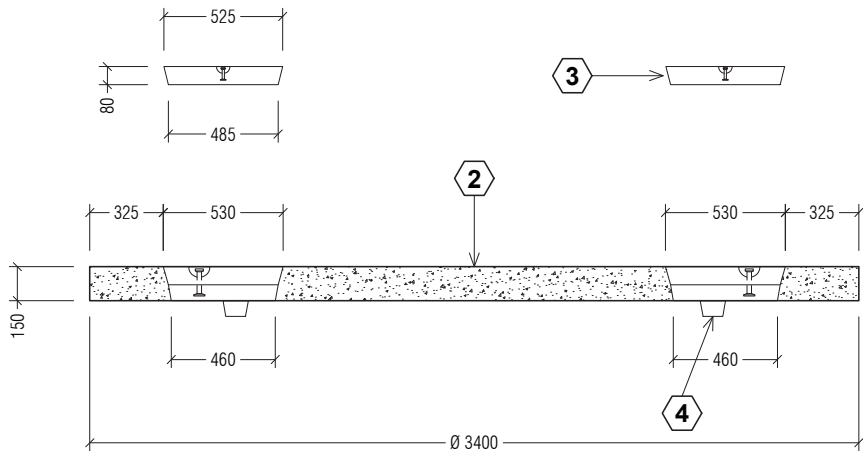
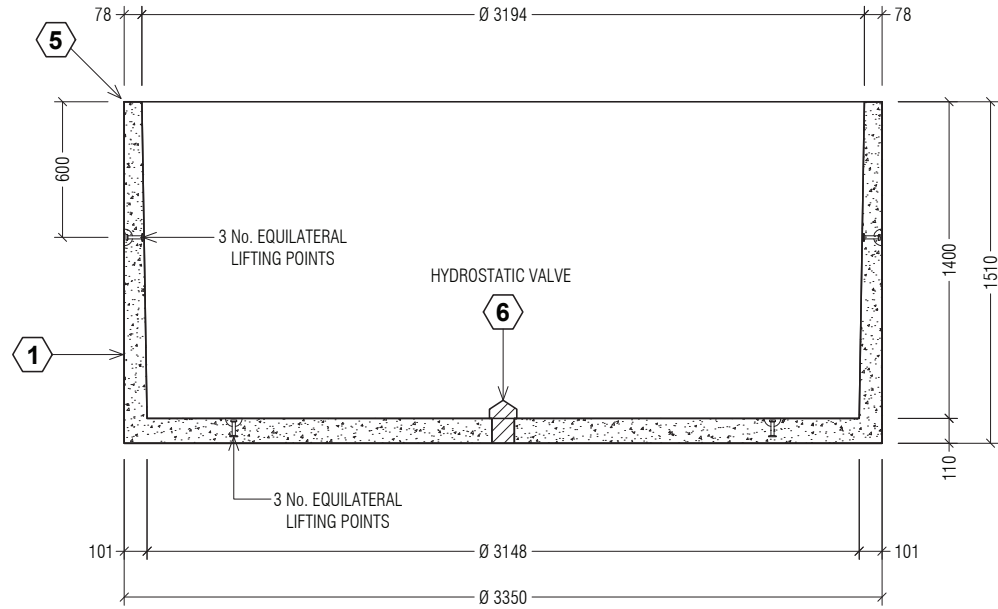


PLAN VIEW



SECTION OF LID



SECTION OF TANK

CLASS RATING :

HEAVY DUTY

LIVE LOAD MASS LIMITS :

MAXIMUM = 3.5T GVM

DEAD LOAD :

MAXIMUM 600 mm OF FILL

CONCRETE GRADE :

CONCRETE STRENGTH 40 MPa
EXPOSURE CLASSIFICATION B1
AS 3600-2001
25 mm MIN COVER TO REO

TOTAL MASS :

LID = 3.270 TONNE
BASE = 5.790 TONNE

LIFTING :

LID - 3EA x 5.0T x 120 LONG
TANK - 6FA x 2.5T x 75 LONG
REID SWIFTLIFT FOOT ANCHORS

NOTES :

ALTERNATIVE ACCESS OPTIONS
CAN BE MANUFACTURED .PLEASE
ENQUIRE WITH ICON SEPTTECH



Quality
ISO 9001



TANKET
Cnr Bayfield Rd East & Canterbury Rd,
Bayswater North 3153 Vic Australia
T: 1300 826 538 www.tanket.com.au



**11,075 Litre Concrete Tank
Heavy Duty**

No.	ITEM CODE	QTY	DESCRIPTION
1	565V11075BSD	1	11075L CONC TANK BASE - SD
2	565V20000LHD	1	20000L CONC TANK LID - HD
3	600V006	2	SQUARE MANHOLE COVER
4	VFT50028	4	SEPTIC BUNGS
5	VMASTIC25	4	25 mm BUTYL MASTIC x 3.6 m ROLL
6	605A110	1	HYDROSTATIC VALVE

No.	DATE	REVISIONS
A	01.03.14	FIRST ISSUE

SCALE	DRG No.	REV
-	565V11075HD	A
DATE	CHECKED	SIZE
01.03.14	D. EGAN	A3