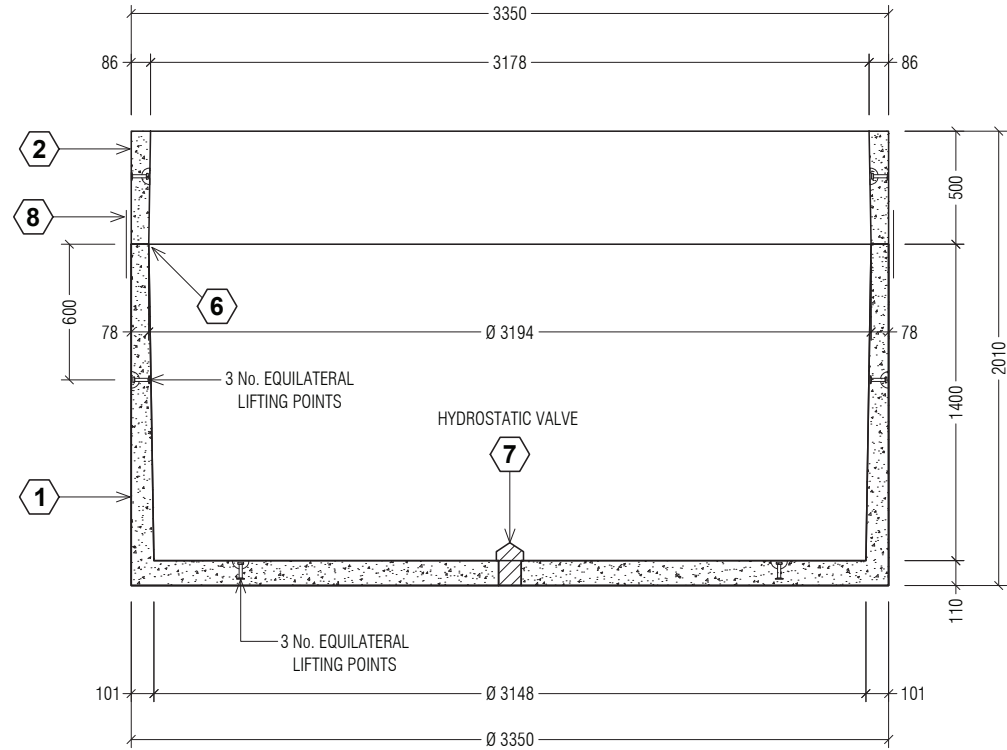
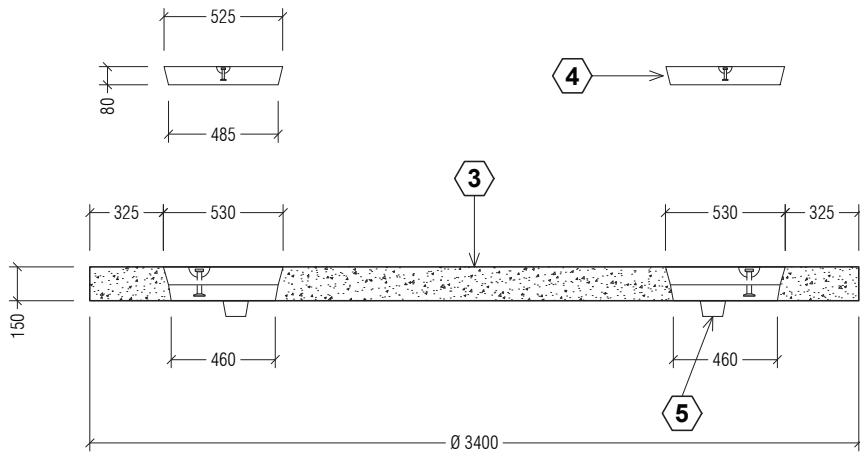


**PLAN VIEW**



**SECTION OF TANK**



**SECTION OF LID**

No.	ITEM CODE	QTY	DESCRIPTION
1	565V11075BSD	1	11075L CONC TANK BASE - SD
2	565V500R	1	500 RING/RISER SECTION
3	565V20000LHD	1	20000L CONC TANK LID - HD
4	600V006	2	SQUARE MANHOLE COVER
5	VFT50028	4	SEPTIC BUNGS
6	VMASTIC25	8	25 mm BUTYL MASTIC x 3.6 m ROLL
7	605A110	1	HYDROSTATIC VALVE
8	VTBRACK	4	LOCATING BRACKETS

No.	DATE	REVISIONS	SCALE	DATE	DRG No.	REV		
A	15.10.14	FIRST ISSUE	-	15.10.14	565V15075HD	A		
No.	DATE	REVISIONS	DRAWN	R.P.	CHECKED	D. EGAN	SIZE	A3

**CLASS RATING :**

HEAVY DUTY

**LIVE LOAD MASS LIMITS :**

MAXIMUM = 3.5T GVM

**DEAD LOAD :**

MAXIMUM 600 mm OF FILL

**CONCRETE GRADE :**

CONCRETE STRENGTH 40 MPa  
EXPOSURE CLASSIFICATION B1  
AS 3600-2001  
25 mm MIN COVER TO REO

**TOTAL MASS :**

LID = 3.270 TONNE  
BASE = 5.790 TONNE  
500 RING = 1.200 TONNE

**LIFTING :**

LID - 3EA x 5.0T x 120 LONG  
TANK - 6FA x 2.5T x 75 LONG  
RING - 3 x 2FA075  
REID SWIFTLIFT FOOT ANCHORS  
500 RING/RISER CAN BE  
DELIVERED SEPARATELY OR SET  
ONTO THE BASE (6.99 TONNE)

**NOTES :**

ALTERNATIVE ACCESS OPTIONS  
CAN BE MANUFACTURED . PLEASE  
ENQUIRE WITH ICON SEPTech



Quality  
ISO 9001



**TANKET**  
Cnr Bayfield Rd East & Canterbury Rd,  
Bayswater North 3153 Vic Australia  
T: 1300 826 538 www.tanket.com.au



**15,075 Litre Concrete Tank  
Heavy Duty**