

**CLASS RATING :**

STANDARD DUTY

**LIVE LOAD LIMITS :**

MAXIMUM = 0.5T GVM

**DEAD LOAD :**

0 TO 1.0 m OF FILL

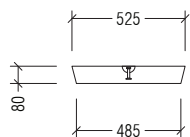
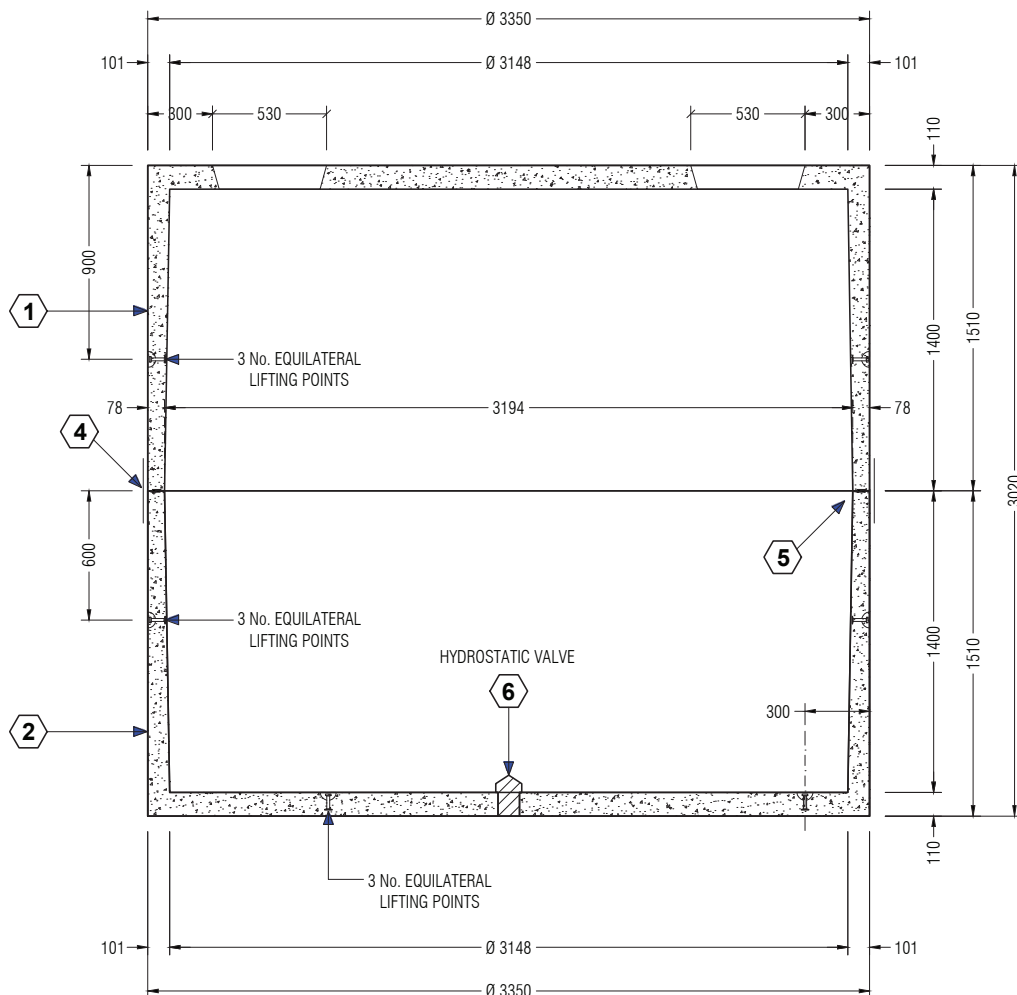
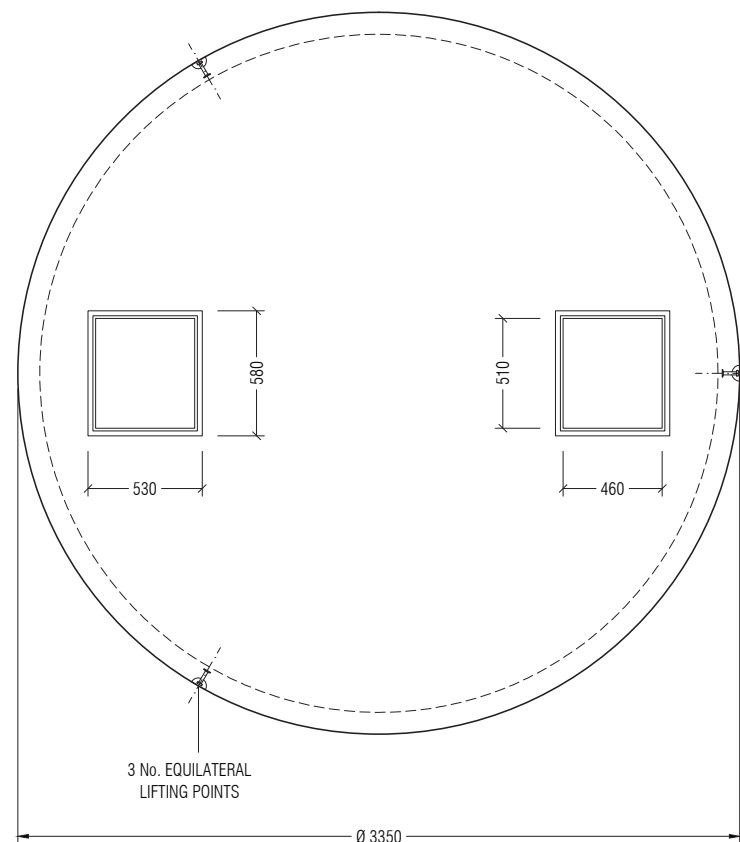
**CONCRETE GRADE :**CONCRETE STRENGTH 40 MPa  
EXPOSURE CLASSIFICATION B1  
AS 3600-2001**TOTAL MASS :**TOP = 5.450 TONNES  
BASE = 5.790 TONNES**LIFTING :**

3 x 2.5T SWIFTLIFT FOOT ANCHORS

**NOTES :**BEARING CAPACITY OF SOIL  
UNDER THE TANK TO BE  
150 KPa MINIMUMQuality  
ISO 9001**TANKET**Cnr Bayfield Rd East & Canterbury Rd,  
Bayswater North 3153 Vic Australia  
T: 1300 826 538 www.tanket.com.au
**22,150 Litre Concrete Tank**  
**Standard Duty**

SCALE	-	DRG No.	REV
DATE	04.10.14	565V22150SD	A
DRAWN	R.P.	CHECKED	D. EGAN
No.	DATE	REVISIONS	SIZE
			A3

1.3T FA x 45 mm

**COVER DETAIL****SECTION OF TANK****PLAN VIEW**

No.	ITEM CODE	QTY	DESCRIPTION
1	565V11075TSD	1	11075L CONC TANK TOP - SD
2	565V11075BSD	1	11075L CONC TANK BASE - SD
3	600V006	2	SQUARE MANHOLE COVER
4	VTBRACK	4	LOCATING BRACKETS
5	VMASTIC25	4	25 mm BUTYL MASTIC x 3.6 m ROLL
6	605A110	1	HYDROSTATIC VALVE