

CLASS RATING :

STANDARD DUTY

LIVE LOAD LIMITS :

MAXIMUM = 0.5T GVM

DEAD LOAD :

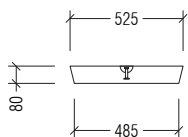
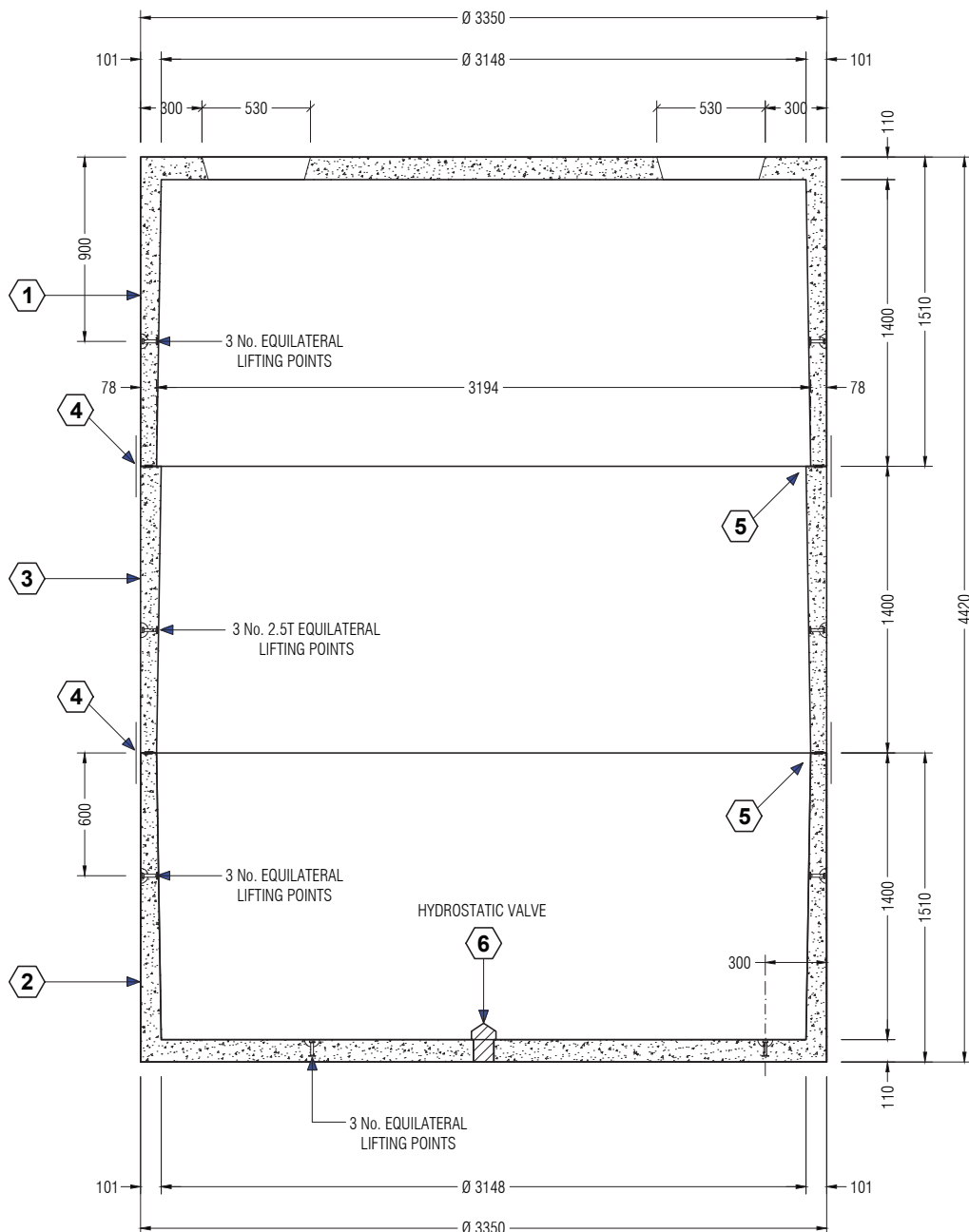
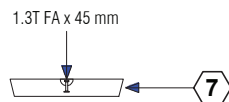
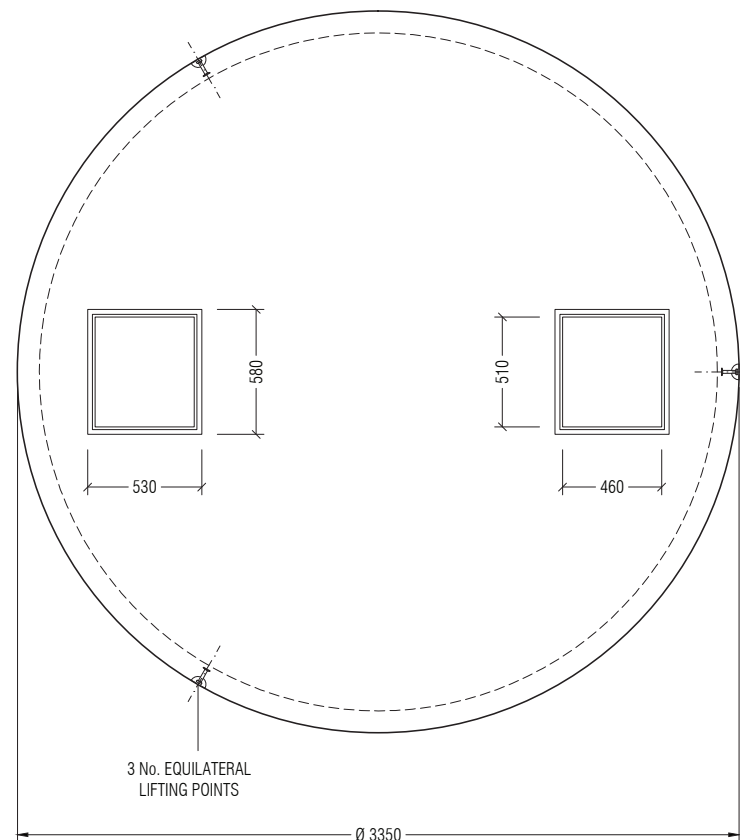
0 TO 1.0 m OF FILL

CONCRETE GRADE :CONCRETE STRENGTH 40 MPa
EXPOSURE CLASSIFICATION B1
AS 3600-2001**TOTAL MASS :**TOP = 5.450 TONNES
BASE = 5.790 TONNES
1400 RING = 3.70 TONNES**LIFTING :**TOP AND BASE :
3 x 5.0T SWIFTLIFT FOOT ANCHORS
1400 mm RING/RISER :
3 x 2.5T SWIFTLIFT FOOT ANCHORS**NOTES :**BEARING CAPACITY OF SOIL
UNDER THE TANK TO BE
150 KPa MINIMUMQuality
ISO 9001

SAI GLOBAL

TANKETCnr Bayfield Rd East & Canterbury Rd,
Bayswater North 3153 Vic Australia
T: 1300 826 538 www.tanket.com.au**33,250 Litre Concrete Tank
Standard Duty**

SCALE	-	DRG No.	REV
DATE	18.11.14	565V33250SD	A
DRAWN	R.P.	CHECKED	D. EGAN
No.	DATE	REVISIONS	SIZE
			A3

**COVER DETAIL****SECTION OF TANK****PLAN VIEW**

No.	ITEM CODE	QTY	DESCRIPTION
1	565V11075TSD	1	11075L CONC TANK TOP - SD
2	565V11075BSD	1	11075L CONC TANK BASE - SD
3	565V1400R	1	1400 mm RING/RISER SECTION
4	VTBRACK	8	LOCATING BRACKETS
5	VMASTIC25	8	25 mm BUTYL MASTIC x 3.6 m ROLL
6	605A110	1	HYDROSTATIC VALVE
7	600V006	2	SQUARE MANHOLE COVER