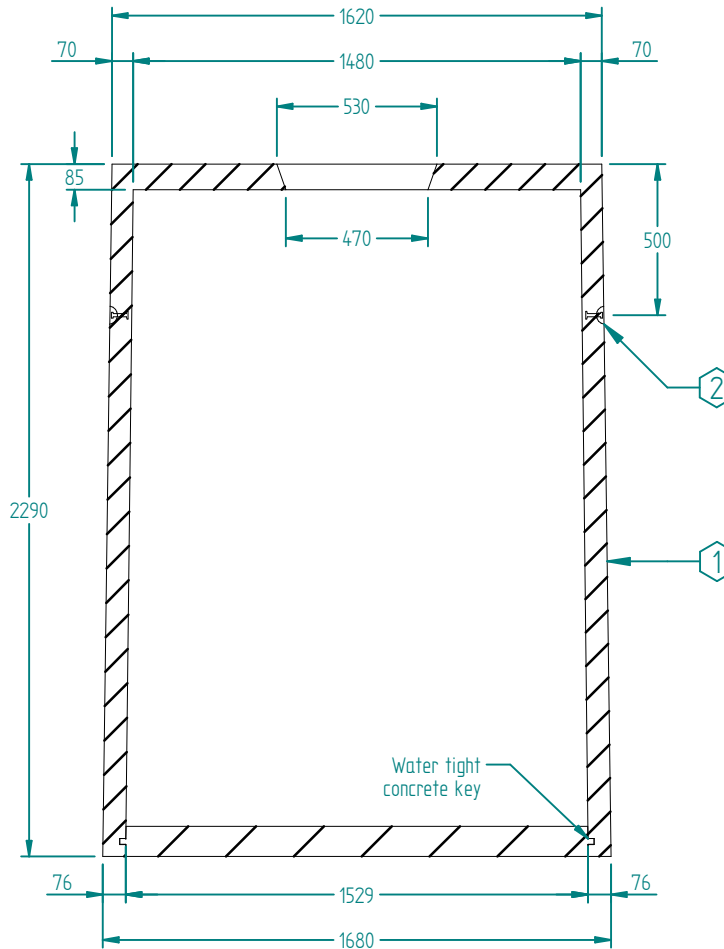
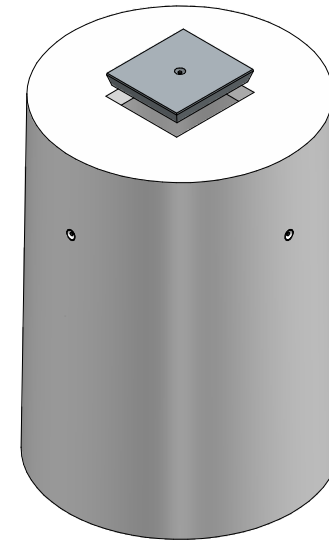


Plan View



SECTION A-A  
1:25



**CLASS RATING**  
STANDARD DUTY

**LIVE LOAD LIMITS**

< 0.5 tonne Max

**DEAD LOAD**

0 to 0.6 Metre fill

**CONCRETE GRADE**

0 to 0.5 Metre fill 40MPa  
Exposure Classification B1  
AS 3600-2001

**TOTAL MASS**

Cover = 54 kg  
Tank = 2.721 Tonnes

**LIFTING**

Swiftlift Foot Anchor  
Cover - 1 x 1.3t x 55mm  
Tank - 3/4 x 1.3t x 55mm  
Swiftlift Clutches Required

**WATER VOLUME**

3800 Litres

**TANK BASE NOTES**

Bearing capacity of soil  
under the tank to be  
150 Kpa Minimum

**NOTES**

Alternative access options  
can be manufactured  
Enquire with Tanket

No.	Item Code	Qty	Description
1	T3800SD	1	3800L SD Concrete Tank
2	T1FA055	4	Swiftlift Foot anchors 1.3T x 55mm
3	T600V006	1	Square Manhole Cover
4	T1FA055	1	Swiftlift 1.3T x 55mm ea - Manhole Cover

No.		DATE	REVISION	3800 Litre Concrete Tank Standard Duty			
SCALE	1:25	DRG No.	REV	T3800SD			
DATE	12/07/2019			-			
DRAWN	W.N.	CHECKED	J. NEILSEN	SIZE	A4		